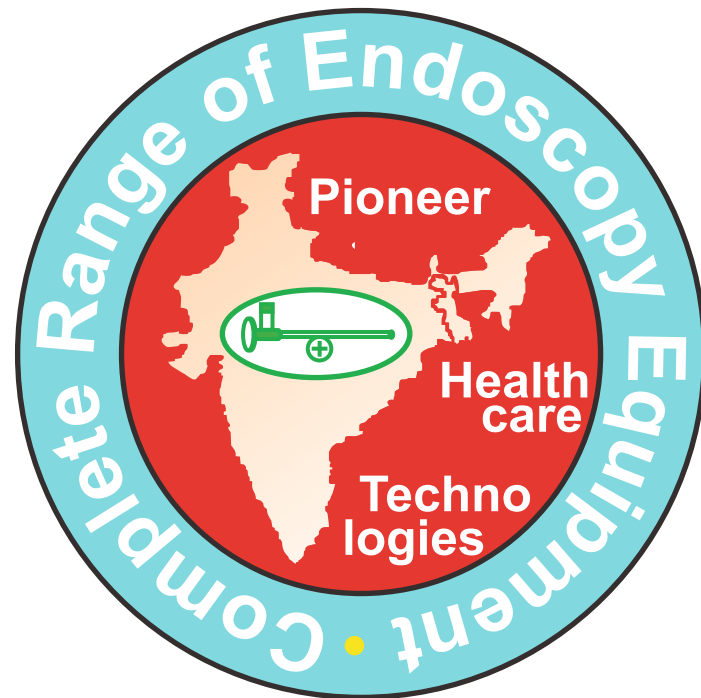


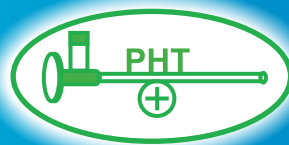
Pioneer Healthcare Technologies™

(ISO 9001/2015 CERTIFIED COMPANY)

CE Certified Products



Sinoscopy, Laparoscopy, Endo-Urology, Hysteroscopy,
Arthroscopy, Flexible Endoscopy.
Repairing of Endoscopy equipment



CE Certified
Product

PIONEER HEALTHCARE TECHNOLOGIES™

S-389, Shivalik Nagar, BHEL, Ranipur, Haridwar-249403 (U.K.) India

Mob. +91-9837067209, 9412074305, 9339812530,

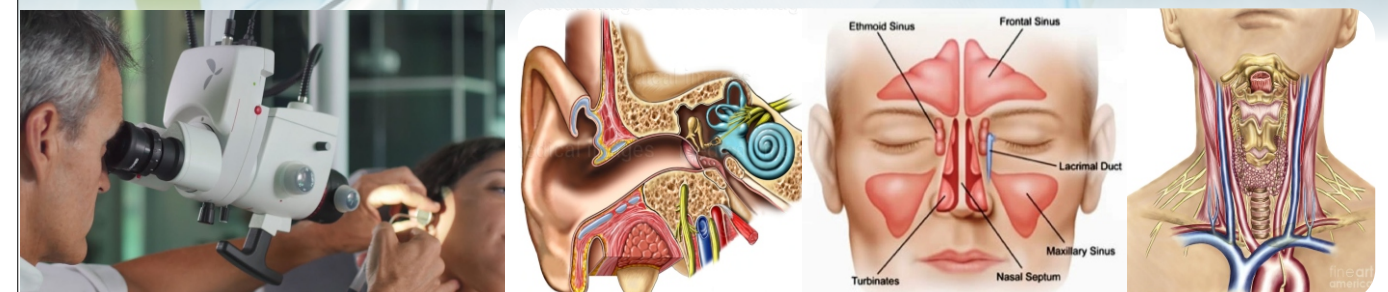
For Repair/Service Contact : +91-9536685757

www.pioneermedical.net, www.pioneerhealthcare.net,
info@pioneermedical.net

Shape & Specification of products subject to change without notice for betterment of product.



Otolaryngology E.N.T. Product Catalogue



(Serving in Medical Industry from more than 25 years)

pioneer

Healthcare Technologies

ISO 9001/2015 Certified Company



CE Certified Product

www.pioneermedical.net,
www.pioneerhealthcare.net,
info@pioneermedical.net

Mob. +91-9837067209, 9412074305, 9339812530



PIONEER HEALTHCARE TECHNOLOGIES®

(Serving in Medical Industry from more than 25 years)

We introduce our self as medical equipment company mainly deals in field of Medical Endoscopy Products related to ENT, General Surgery, Urology, Gynae, Ortho, Neuro & Veterinary Our head office is at Haridwar (Uttarakhand) our Sales Engineer and various distributor are located different part of Indian which includes W.B., Bihar, Rajasthan, Delhi, M.P., Gujrat, U.P., Karnataka, Maharastra, A.P., T.N., P.B., H.P., N.E., J.H. etc., to provide prompt and reliable service all the time. We welcome you to call us or mail us for any query or demonstration.



PIONEER HEALTHCARE TECHNOLOGIES®

(Serving in Medical Industry from more than 25 years)

Labomed Microscope Accessories Optional:

- ◆ Lens 400mm.
- ◆ 0-210° Tiltable Ergonic Head
- ◆ NuVar system with continuous variable working distance from 200-400 mm.
- ◆ Motorized fine focusing (Z-axis) by remote operated foot control.
- ◆ Beam Splitters with Labomed HD Camera.



Single End Beam Splitter with HD Camera For Recording & Still Capture Image Facility



Double Beam Splitter with Camera Adapter

HD Camera Images



Our other product range for General Sugery, Urology, Gynae, Neuro & Ortho

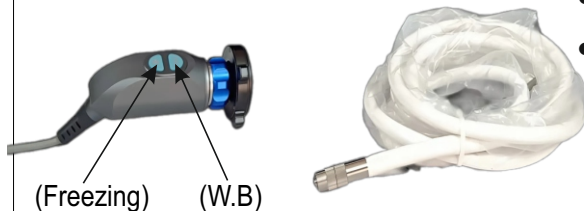
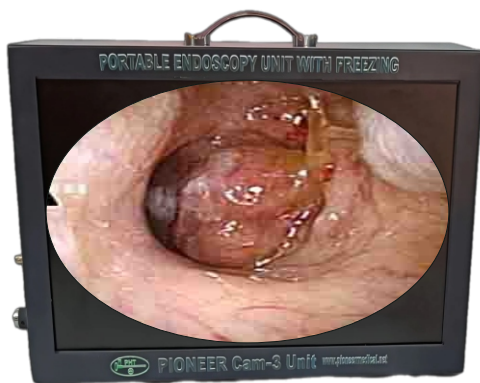
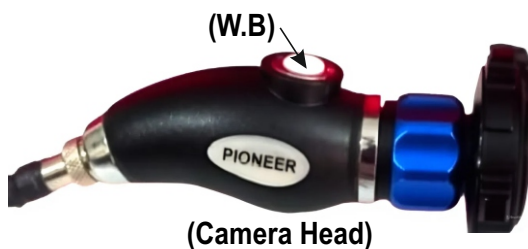
- Complete laparoscopy set which includes Endoscopy Camera, Laparoscope, Co₂ Insufflator, Light Source and Hand Instruments.
- Complete Orthoscopy Set includes Endoscopy Camera and Orthoscopy basic Instruments, Orthoscopy Shaver.
- Complete Endo Urology set consist of Cystoscopy and TURP set includes Cystoscope Sheath, Resectoscope, Stone Punch, Pneumatic Lithotripter.
- Endo Gynae Set includes Hysteroscopy Set, Lap-Gynae Set and Colposcope.
- Fiber Optic Flexible & Video Gastroscope, Colonoscope, Duedenoscope etc
- Neurosurgery Microscope, Eye Operating Microscope, Dental Microscope etc.



Endoscopy Portable Mobile Unit (3 in 1) Standard

Including of Camera, Mini LED Source & Monitor

- Natural Colour Resolution with sony CCD
- Camera With White balance button on head
- Coupler with self-lock System (Without Screw)
- Inbuilt Dismantable Mini Led Light
- Extra video output (for P C or Second Monitor)
- Easy to Carry, Weight approx.5kg with carrying bag



Portable Endoscopy Unit with freezing

Including of Monitor, LED Light Source With Fibre Optic Cable & Endoscopy Camera Pioneer Cam-III

- High Resolution CCD with white balance on head
- Freezing button on head of camera
(Useful to explain patient during OPD diagnosis)
- Inbuilt Led Light Source with fiber cable
- Extra video output for extra monitor or PC



- Single Power Cable for Unit
- Inbuilt with Pioneer Cam -1
- Mini LED Source

(Economical Model)

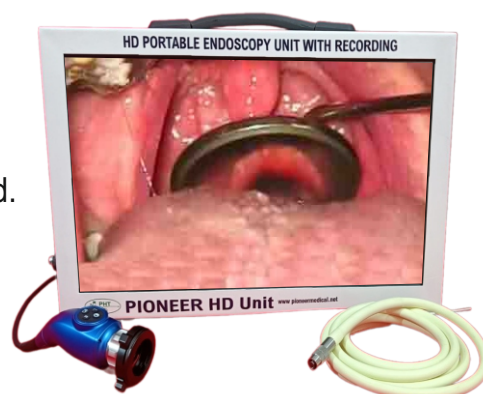


HD Portable Endoscopy Unit 4 in 1

HD Camera, LED source, Monitor, recording

Features

- 4 in 1, Camera +LED Light Source+Monitor+HD Recorder.
- HD Monitor, 19 inch.
- With suitcase, easy to carry.
- Freezing+White Balance+Brightness Control Button on Head.
- Zoom+Recording+Color Control Button of panel.
- Application Sinoscopy, Hysteroscopy, Cystoscopy, Laparoscopy, Orthoscopy, Gynecology, Spine Endoscopy Urology etc.



HD Endoscopy Camera (Pioneer)

(With Inbuilt Recording & Freeze Option)

- Freeze Button on head
- White Balance button on head.
- Inbuilt Recording and snap shot (Still Image).
- Advance Setting option by menu control button
- Zoom Facility button on panel
- HD CCD (ensure natural vision for all endoscopy procedure). HD Grade Monitor LED Light Source 150w with fiber cable
- Monitor, LED light source with Fiber Cable



HD Endoscopy Camera Standard (Pioneer)

- White balance and freeze on head
- Zoom and other advance function on panel
- HD CCD (ensure natural vision for all endoscopy procedure).

Optional

Monitor, LED Light Source with Cable



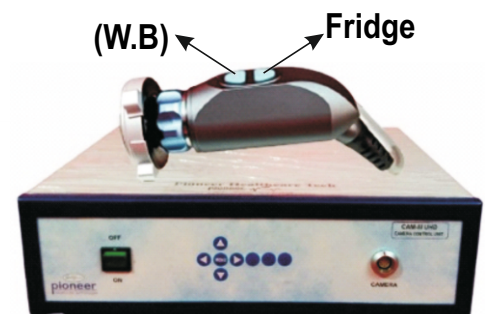
Endoscopy Camera Pioneer CAM-II

- Portable Cam II Camera with inbuilt LED Light
- White Balance on Head
- Coupler with self-lock(without screw)
- Double video output for extra monitor
- Along with inbuilt 10 watt LED Light



Endoscopy Camera Pioneer CAM-III with Freezing

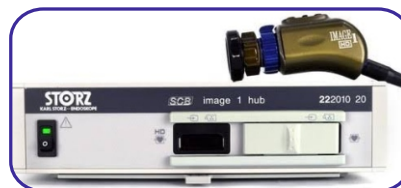
- Useful for all kind of Endoscopy Procedure
- White balance button on head
- Freeze button on head (especially useful for OPD)
- With Natural Color Resolution
- User friendly, Light weight



Refurbished Single & Three Chip HD Camera

We are having excellent condition Refurbished three chip & single chip endoscopy camera of Karl storz, stryker, Olympus etc. at very affordable pricing

Stryker HD Camera / Karl Storz HD Camera





Video FNL Scope

- Chip on tip technology
- Inbuilt Led System
- Outer dia- 3.8mm working channel 1.4mm
- Work on PC and Mobile directly
- In built suction with angulation
- Along with accessories
 1. Cytology Brush
 2. Dormia Basket



Optional -

1. Rat Tooth Biospy (Imported)

ENT Surgery Microdebrider

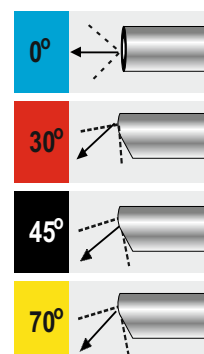
- RPM up to 6000.
- Noiseless powerful motor
- Hand piece Adaptable to xomed (Medtronic) blades
- Clockwise, anticlockwise and oscillating mode
- Prompt and guaranteed Pioneer after sale service



Sincoscope , Otoscope, Laryngoscope

**High Quality Rod Lenses ,Wide Angle, Sapphire Tip
& Bright light transmission**

Diameter	Angels	Working Length
2.7mm	0°	110mm
2 7 mm	0°	175mm
4 mm	0°	50 mm
4mm	0°	175mm
8mm	70	185mm
8mm	90	185mm





ENT Treatment Unit used for all kind of OPD

Procedure including of following item

- Built in LED Light Source
- Built in Suction Machine
- X-Ray View Box
- Anti-fog device
- Stainless steel Instrument Tray with cover
- Jars for keeping Items
- Medicine Bottles
- Drawers for Storage
- Endoscope Holder
- Endoscope camera Holder
- Irrigation with foot paddle
- Fiber optic cable with Head Band
- Inbuilt camera supply (for cam -2 camera)
- Heavy duty and long lasting outer cabinet



Optional

- Endoscopy Camera cam II With Monitor
- Patient Chair Hydraulic with foot pedal
- Surgeon Stool
- Sinoscope

ENT Examination Unit used for all kind of OPD

Procedure including of following item Model- Luxury

Features

- Inbuilt LED Light source with fiber optic cable
- Built in Instrument tray with cover for storage in Front panel
- Powerful spray gun 3 pcs (Straight 2 pcs, bend 1 pcs)
- Inbuilt air blow gun
- Automatic suction gun, 10 second delayed shut off
- Medicine Bottle Set
- In built Long Bulls Lamp
- Built in Laryngeal Mirror Warmer System
- Stand for Holding Otoscope, Sinoscope and Laryngoscope on the panel
- Built in and Cotton/ Gauge Box Conveniently located on the panel
- Built in Sleek, LED, X- Ray View Box
- Built in Tray for used instrument at lower panel
- Built in Dustbin at lower panel
- Built in Space for CPU Storage and Printer
- Built in writing desk and keyboard system tray
- Heavy duty top surface with lockable castor wheels
- Dimensions Front Length 125cm, Width 60cm, and Height 75cm.
- Weight Approx. 120 Kg



Optional

- Endoscopy Camera
- Monitor
- Patient Chair Motorized
- Surgeon Stool
- Sinoscope



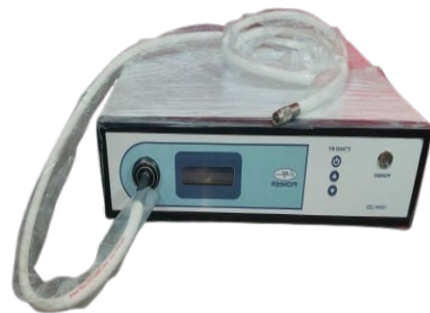
Repairing of Sinoscope

- We have facility for repair & service of all make Sinoscope, Laparoscope Cystoscope orthoscope of Chinese as well as German make like storz wolf, styker



LED Light Source 150watt

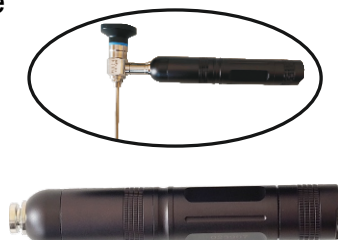
- Powerful bright white light
- Long life of LED (Approx. 20,000 hours)
- Useful for all kind of Endoscopy surgery.
- Compact & Digital.
- Fiber Optic cable 5mm, 7.5 feet



LED Torch Light 10 Watt (Pen Light)

- Bright white light
- Very compact bright light along with rechargeable battery & charger

Note : Economical LED Torch Light (Pen Light) also available



USB LED Light 10 Watt

- Bright White light, Compact, Easy to Carry
- Can be attach by power bank, laptop or direct power point.



ENT Accucut Plasma System

Features

- Long Lasting Tungsten Filament.
- 2mm Bigger Inbuilt Suction.
- 45 Degree Pre – Angulation for Adenoids & 22cm Length for Larynx
- Unique Batons with Various Length and Angles for Different Procedures.
- Useful for Tonsill, Adenoid, Nasal, Laryngeal Surgery & other ENT Surgery.

ISO 9001 : 2015 | ISO 13485:2016 | CE 10101

AccuCut
Plasma System
EN 5000-01-00



ENT LOW TEMPERATURE PLASMA SYSTEM

Cautery Machine 400/300/100 watt

- Monopolar and bipolar function
- Pure and blend cut function
- Useful for all kind of surgery including of ENT, G. Surgery, Urology etc.



ENT Surgery Hand Instrument Set

(Export Quality with medical grade steel both SS & Titanium)

- FESS SUGERY SET (SET OF 11 INSTRUMENTS)
- TYMPANOPLASTY SET (SET OF 22 INSTRUMENTS)
- MICRO LARYNGEAL SET (SET OF 15 INSTRUMENTS)
- OESOPHAGOSCOPY SURGERY SET (SET OF 12 INSTRUMENTS)
- BRONCHOSCOPY SURGERY SET (SET OF 12 INSTRUMENTS)
- MASTOID SURGERY SET (SET OF 28 INSTRUMENTS)
- SEPTORHINOPLASTY SET (SET OF 25 INSTRUMENTS)
- PARANASAL SINUS SURGERY SET (SET OF 18 INSTRUMENTS)
- DCR SURGERY SET (SET OF 20 INSTRUMENTS)
- TONSILLECTOMY & ADENOIDECTOMY SET (SET OF 25 INSTRUMENTS)
- TRACHEOSTOMY SET (SET OF 12 INSTRUMENTS)
- CAW THORNE HOOKS SET (SET OF 8 INSTRUMENTS)
- STAPEDETOMY SET (SET OF 9 INSTRUMENTS)
- SHEA EAR OPERATING SET (SET OF 11 INSTRUMENTS)
- AUSTIN MIDDLE EAR SET (SET OF 12 INSTRUMENT)
- MYRINGOTOMY SET (SET OF 15 INSTRUMENTS)
- ENT GENRAL SET O.T. (SET OF 25 INSTRUMENTS)





LED Head Light

Rechargeable Battery with Charger



Option1:LED Head Light Indian



Option2:LED Head Light Imported



Option3:LED Head Light Soft Imported

Note : Fibre Optic Head Band also available

Software for Endoscopy

- Facility for multiple Images on single page
- Patient detail format included
- Facility to put up mark or sign in image
- Single page can carry multiple image
- Foot Pedal for freezing of images.



Repair Facility for Sinoscope/Laparoscope/Cystoscope, Endoscopy Camera, Light Source, Microscope & all kind of Medical Endoscopy Equipments.



ENT Operating Microscope (Pioneer India)

Technical Specifications

- Description : Advance Optical System designed for easier handling and versatility in ENT surgery.
- Magnification : 5X, 10X, 20X (3-step)
- Binocular Tube : 90°
- Eye Piece : 12.5x paired wide field.
- Objective Lens : F = 200mm
- Light Source : 100 watt L.E.D. Light.
- Illumination : Direct LED Light.
- Arm : Counter balance pantographic arm with 320° rotation.
- Stand : Mobile floor stand on caster wheels for easy handling and absolute stability.
- Power supply : AC 220V/240V

Optional :

- Lens 400mm
- Beam splitter with Camera Attachment
- Endoscopy Camera with Monitor
- 5 Step Magnification



Portable Table Top Microscope

Technical Specifications

- Three step magnification 5x, 10x, 20x.
- Illumination- direct LED light.
- Light weight, easily dismantable.
- Useful for mobile purpose.

Optional - Carrying Case





ENT Operating Microscope Prima 5 step (Labomed, USA)

Technical Specifications

Binocular Tubes:

90° Straight head, IPD 55-75mm.

Optional

210° Tilttable Binocular.

Magnification:

5 Step: 0.4X, 0.6X, 1.0X, 1.6X, and 2.5X.

Objective:

F = 250mm Objective with fine focus

Illumination system: Cold LED Source, LED life more than 30,000 hours.

Stand: Prima ENT microscope stand, Castor wheel with locking system
Auto power off at top parking position

Torque adjustment feature to ensure automatic Balancing.

Optional

1. 400mm Lens
2. HD Camera with recording, Beam Splitter and Monitor



ENT Operating Microscope Prima Mu 3 step, (Labomed, USA)

Technical Specifications

Binocular Tubes:

90° Straight head, IPD 55-75mm

Magnification:

3 Step: 0.6X, 1.0X, 1.6X.

Objective:

f = 250mm Objective with fine focus.

Illumination system: Cold LED Source, LED life more than 30,000 hours.

