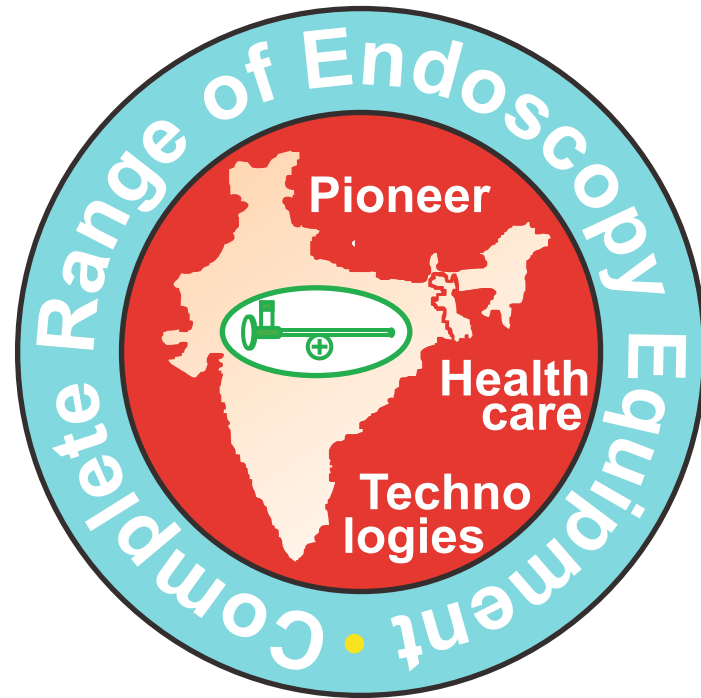


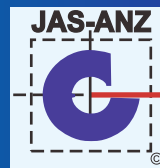
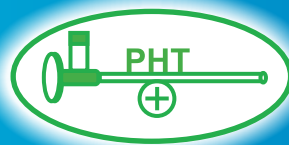
# Pioneer Healthcare Technologies™

(ISO 9001/2015 CERTIFIED COMPANY)

CE Certified Products



ENT Sinoscopy, Laparoscopy, Endo-Urology, Hysteroscopy,  
Arthroscopy, Neuro Microscope, Eye Microscope  
Repairing of Endoscopy equipment



CE Certified Product

## PIONEER HEALTHCARE TECHNOLOGIES™

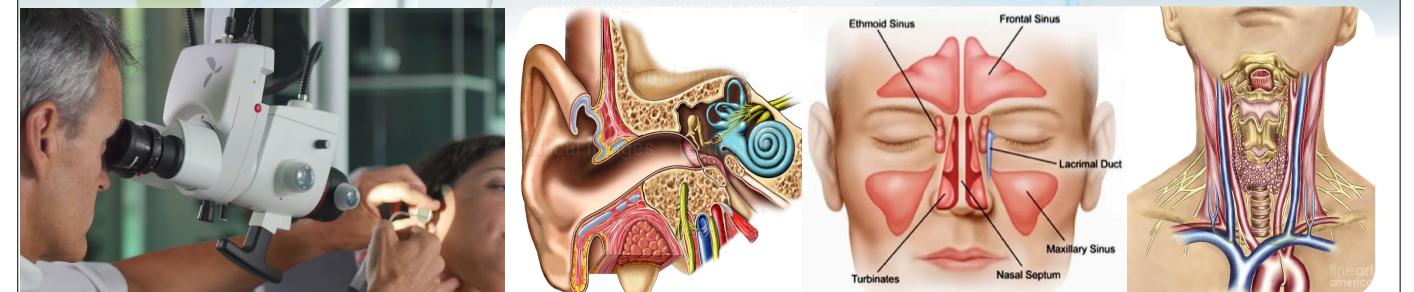
Second Floor, S 297, Rawat Complex, Shivalik Nagar, Opp. PNB Bank, Haridwar - 249403, Uttarakhand

Mob. +91-9837067209, 9412074305, 9339812530,  
For Repair/Service Contact : +91-9536685757  
[www.pioneermedical.net](http://www.pioneermedical.net), [www.pioneerhealthcare.net](http://www.pioneerhealthcare.net),  
[info@pioneermedical.net](mailto:info@pioneermedical.net)

Shape & Specification of products subject to change without notice for betterment of product.



## Otolaryngology E.N.T. Product Catalogue



(Serving in Medical Industry from more than 25 years)

# pioneer

Healthcare Technologies  
ISO 9001/2015 Certified Company



CE Certified Product

[www.pioneermedical.net](http://www.pioneermedical.net),  
[www.pioneerhealthcare.net](http://www.pioneerhealthcare.net),  
[info@pioneermedical.net](mailto:info@pioneermedical.net)

Mob. +91-9837067209, 9412074305, 9339812530



We introduce our self as medical equipment company mainly deals in field of Medical Endoscopy Products related to ENT, General Surgery, Urology, Gynae, Ortho, Neuro & Veterinary Our head office is at Haridwar (Uttarakhand) our Sales Engineer and various distributor are located different part of Indian which includes W.B., Bihar, Rajasthan, Delhi, M.P., Gujrat, U.P., Karnataka, Maharastra, A.P., T.N., P.B., H.P., N.E., J.H. etc., to provide prompt and reliable service all the time. We welcome you to call us or mail us for any query or demonstration.



### Certificate of Compliance



We hereby declare that the technical files of all the items in each product group of complied with the requirements of the Medical Device Regulation - (Council Regulation 2017/745).

Certificate No.: CE-5240

**Manufacturer Name** PIONEER HEALTHCARE TECHNOLOGIES  
**Address** : Second Floor, S 297, Rawat Complex, Shivalik Nagar, Opp. PNB Bank, Haridwar - 249403, Uttarakhand

**Product** : AS PER APPENDIX- I

**Complies with the requirements applicable to it**  
The quality system file has been assessed, approved and is subject to continuous surveillance according to the Medical Device Regulation - (Council Regulation 2017/745).

**This certificate is issued under the following conditions:**

1. It applies only to the quality system maintained in the manufacture of above referenced models and it does not substitute the design or type-examination procedures, if requested.
  2. The certificate remains valid until the manufacturing conditions or the quality systems are changed.
  3. The certificate validity is conditioned by positive results or surveillance audits.
- The CE mark as shown above can be used, under the responsibility of the manufacturer, after completion of an EC Declaration of conformity and compliance with all relevant EC Directives. The statement is based on a single evaluation of one sample of above mentioned product. It does not imply an assessment of the whole production.

Validity of this certificate can be verified at [www.ukcertifications.org.uk/verify](http://www.ukcertifications.org.uk/verify)

Date of Certification 10<sup>th</sup> January 2024  
 1<sup>st</sup> Surveillance Audit Due 09<sup>th</sup> January 2025  
 2<sup>nd</sup> Surveillance Audit Due 09<sup>th</sup> January 2026  
 Certificate Expiry (subject to the company maintaining its system to the required standard) 09<sup>th</sup> January 2027

*Daniel..*

Authorised Signatory



page 1 of 2

This certificate is the property of UK Certification & Inspection Limited and shall be returned immediately upon request.  
71-75 Shelton Street, Covent Garden, London, WC2H 9JQ, United Kingdom  
Website: [www.ukcertifications.org.uk](http://www.ukcertifications.org.uk), email: [info@ukcertifications.org.uk](mailto:info@ukcertifications.org.uk)  
Company No. 11847851



### Certificate of Registration

This is to certify that

**PIONEER HEALTHCARE TECHNOLOGIES**  
 SECOND FLOOR, S 297, RAWAT COMPLEX, SHIVALIK NAGAR, OPPOSITE PNB BANK, HARIDWAR, UTTARAKHAND

has been independently assessed by QRO and is compliant with the requirement of:

**ISO 9001:2015**

#### Quality Management System

For the following scope of activities:

**MANUFACTURING & TRADING OF MEDICAL ENDOSCOPY & EQUIPMENTS USED FOR ENT, GENERAL SURGERY, UROLOGY & GYNAECOLOGY**

Date of Certification: 10th January 2024      1<sup>st</sup> Surveillance Audit Due: 9th January 2026  
 1<sup>st</sup> Surveillance Audit Due: 9th January 2025      Certificate Expiry 9th January 2027

Certificate Number: 305024011025Q



Validity of this certificate is subject to annual surveillance audits to be done successfully on or before 365 days from date of the audit. In case surveillance audit is not allowed to be conducted, this certificate shall be suspended / withdrawn.

The Validity of this certificate can be verified at [www.qrocert.org](http://www.qrocert.org)  
This certificate of registration remains the property of QRO Certification LLP, and shall be returned immediately upon request.

India Office : QRO Certification LLP  
142, IInd Floor, Avstar Enclave, Near Paschim Vihar West Metro Station, Delhi-110063, (INDIA)  
Website : [www.qrocert.org](http://www.qrocert.org), E-mail : [info@qrocert.org](mailto:info@qrocert.org)



## Microscope ENT/Neuro/Plastic/Dental (Labomed,USA)

### Binocular Tube:

0-210° Tilttable head.

**Objective:** Variable Objective lens WD= 200-400 mm.

Motorized Fine Focus Z Axis (up and down) by foot.

### Magnification:

5 Step Magnification (.4X, .6X, 1.0X, 1.6X, and 2.5X)

### Built - in Filters:

Yellow and Green

### LED Light Source:

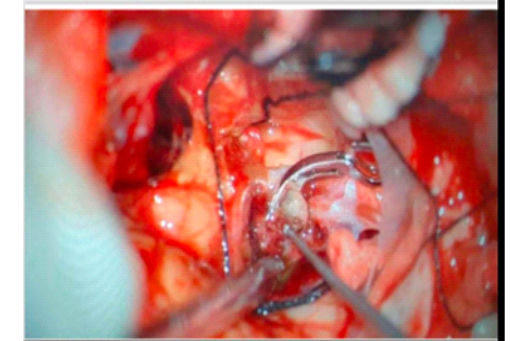
Special design LED source for better visualization.

### Base and Wheels: -

H Shape Heavy and Sturdy Base with Castor wheel and Breaks



[www.pioneermedical.net](http://www.pioneermedical.net)



## HD Camera Images



## Our other product range for General Sugery, Urology, Gynae, Neuro & Ortho

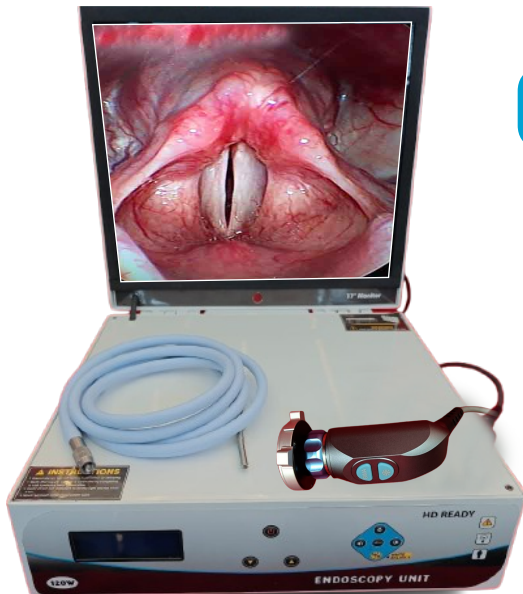
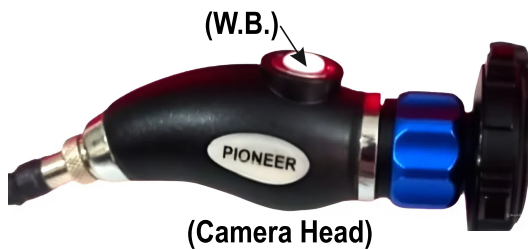
- Complete Laparoscopy set which includes Endoscopy Camera, Laparoscope, Co2 Insufflator, Light Source and Hand Instruments.
- Complete Arthroscopy Set includes Endoscopy Camera and Arthroscopy basic Instruments, Arthroscopy Shaver.
- Complete Endo Urology set consist of Cystoscopy and TURP set includes Cystoscope Sheath, Resectoscope, Stone Punch, Pneumatic Lithotripter.
- Endo Gynae Set includes Hysteroscopy Set, Lap-Gynae Set and Colposcope.
- Fiber Optic Flexible & Video Gastroscope, Colonoscope, Duedenoscope etc
- Neurosurgery Microscope, Eye Operating Microscope, Dental Microscope etc.



## Endoscopy Portable Mobile Unit (3 in 1) Standard

### Including of Camera, Mini LED Source & Monitor

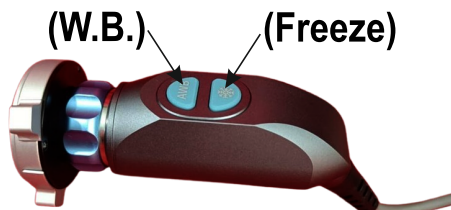
- Natural Colour Resolution with sony CCD
- Camera With White balance button on head
- Coupler with self-lock System (Without Screw)
- Inbuilt Dismantable Mini Led Light
- Extra video output (for PC or Second Monitor)
- Easy to Carry, Weight approx.5kg with carrying bag



## Portable Endoscopy Unit with Cam-III

### Including of Monitor, LED Light Source With Fibre Optic Cable & Endoscopy Camera Pioneer Cam-III

- High Resolution CCD with white Balance on Head
- Freeze Button on Head of Camera  
(Use full to explain Patient during OPD Diagnosis)
- Inbuilt Led Light Source with fiber cable
- Extra video output for extra Monitor or PC
- 22" HD LED Monitor



- Single Power Cable for Unit
- Inbuilt with Pioneer Cam -1
- Mini LED Source

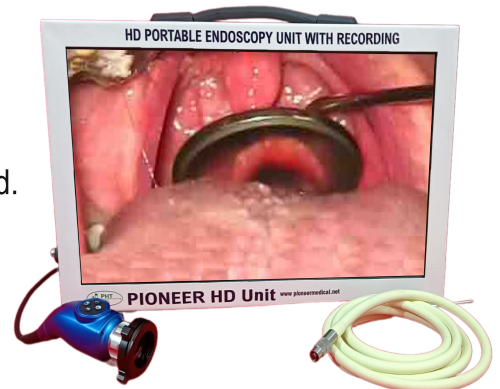
### (Economical Model)



## HD Portable Endoscopy Unit 4 in 1

### HD Camera, LED Source, Monitor, Recording Features

- 4 in 1, Camera +LED Light Source+Monitor+HD Recorder.
- HD Monitor, 22 inch.
- With suitcase, easy to carry.
- Freezing+White Balance+Brightness Control Button on Head.
- Zoom+Recording+Color Control Button of panel.
- Application Sinuscopy, Hysteroscopy, Cystoscopy, Laparoscopy, Orthoscopy, Gynecology, Spine Endoscopy Urology etc.



## HD Endoscopy Camera (Pioneer)

### (With Inbuilt Recording & Freeze Option)

- Freeze Button on head
- White Balance button on head.
- Inbuilt Recording and snap shot (Still Image).
- Advance Setting option by menu control button
- Zoom Facility button on panel
- HD CCD (Ensure Natural vision for all Endoscopy Procedure).
- HD Grade Monitor LED Light Source 150w with fiber cable

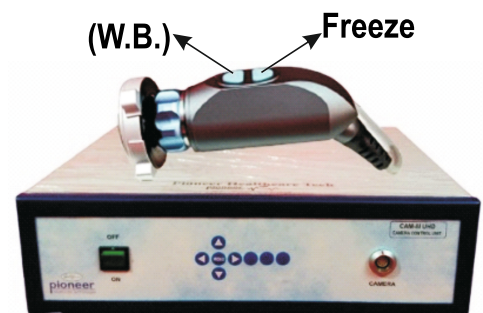


## Endoscopy Camera Pioneer CAM-III with Freezing

- Useful for all kind of Endoscopy Procedure
- White balance button on head
- Freeze button on head (Specially useful for OPD )



Camera with inbuilt light source



## Endoscopy Camera Pioneer CAM-II

- Portable Cam II Camera with inbuilt LED Light
- White Balance on Head
- Coupler with self-lock(without screw)
- Double video output for extra monitor
- Along with inbuilt 10 watt LED Light



## Endoscopic USB Camera

- Full HD USB 3.0 Endoscopic Camera White Balance on Camera Head. Plug and Play. Patient Reporting Software (Optional)



## Wireless Endoscope Camera System

- Full HD Camera 1080P
- Manual White Balance
- 32GB Internal Memory.
- Capture & Video Recording
- Application for Mobile/Tablet
- Rechargeable Portable



1080 FHD +



Portable



Wireless



Waterproof



Multi-display

## Refurbished Single & Three Chip HD Camera

We are having excellent condition Refurbished three chip & single chip endoscopy camera of Karl storz, stryker, Olympus etc. at very affordable pricing

### Stryker HD Camera / Karl Storz HD Camera





## Video FNL Scope

- Outer dia- 4 mm working channel 2mm
- Chip on tip technology
- Inbuilt Led System
- Work on PC and Mobile directly
- In built Suction with Angulations
- Reporting Option Available

### Along with Accessories

1. Rat tooth forcep-1
2. Biopsy forcep-1
3. Cleaning Brush-1

Efficient For ENT endoscopy and swallowing diagnostics

#### Ergonomic handle

Make the inspection process more comfortable and reduce fatigue



#### USB Output

Support Android/macOS/windows

#### Angulation lever

1:1 implementation of hand movements through to the distal end

#### 130° Up/Down

Easy to observe the situation in the ear, nose and throat

#### CMOS+LED

1280x720px resolution



## ENT Surgery Microdebrider

- RPM up to 6000.
- Noiseless Powerful Motor
- Hand piece Adaptable to xomed (Medtronic) blades
- Clockwise, anticlockwise and oscillating mode
- Prompt and guaranteed Pioneer after sale service





## ENT Treatment Unit used for all kind of OPD

### Procedure including of following item

- Built in LED Light Source
- Built in Suction Machine
- X-Ray View Box
- Anti-fog device
- Stainless steel Instrument Tray with cover
- Jars for keeping Items
- Medicine Bottles
- Drawers for Storage
- Endoscope Holder
- Endoscope camera Holder
- Irrigation with foot paddle
- LED Head Band
- Inbuilt camera supply (for cam -2 camera)
- Heavy duty and long lasting outer cabinet



### Optional

- Endoscopy Camera cam II With Monitor
- Patient Chair Hydraulic with foot pedal
- Surgeon Stool
- Sinoscope

## ENT Examination Unit used for all kind of OPD

### Procedure including of following item Model- Luxury

#### Features

- Inbuilt LED Light source with fiber optic cable
- Built in Instrument tray with cover for storage in Front panel
- Powerful spray gun 3 pcs (Straight 2 pcs, bend 1 pcs )
- Inbuilt air blow gun
- Automatic suction gun, 10 second delayed shut off
- Medicine Bottle Set
- In built Long Bulls Lamp
- Built in Laryngeal Mirror Warmer System
- Stand for Holding Otoscope, Sinoscope and Laryngoscope on the panel
- Built in and Cotton/ Gauge Box Conveniently located on the panel
- Built in Sleek, LED, X-Ray View Box
- Built in Tray for used instrument at lower panel
- Built in Dustbin at lower panel
- Built in Space for CPU Storage and Printer
- Built in writing desk and keyboard system tray
- Heavy duty top surface with lockable castor wheels
- Dimensions Front Length 125cm, Width 60cm, and Height 75cm.
- Weight Approx. 120 Kg



#### Optional

- Endoscopy Camera
- Monitor
- Patient Chair Motorized
- Surgeon Stool
- Sinoscope



### LED Light Source 150watt

- Powerful bright white light
- Long life of LED (Approx. 30,000 hours)
- Useful for all kind of Endoscopy surgery.
- Compact & Digital.
- Fiber Optic cable 5mm, 7.5 feet



### LED Light Source 100watt



### LED Torch Light 10 Watt (Pen Light)

- Bright white light
  - Very compact bright light along with rechargeable battery & charger
- Note : Economical LED Torch Light (Pen Light) also available



### USB LED Light 10 Watt

- Bright White light, Compact, Easy to Carry
- Can be attach by power bank, laptop or direct power point.



### Software for Endoscopy

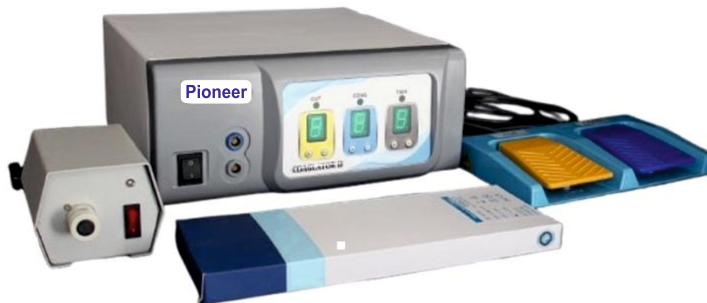
- Facility for multiple Images on single page
- Patient detail format included
- Facility to put up mark or sign in image
- Single page can carry multiple image
- Foot Pedal for freezing of images.



## Plasma System( Coagl.) including of Features.

### Features

- Long Lasting Tungsten Filament
- 2mm Bigger Inbuilt Suction
- Unique Batons with Various Length and Angles for Different Procedures
- Avoids Bleeding, Relieves patient pain
- No Postoperative complications
- Useful for Tonsill,Adenoid,Nasal Laryngeal Surgery & other ENT Surgery



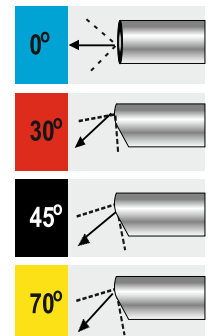
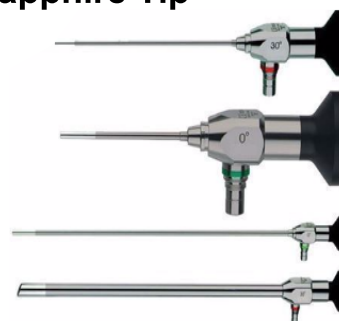
## Cautery Machine 400/300/100 watt



## Sinoscope , Otoscope, Laryngoscope

High Quality Rod Lenses ,Wide Angle, Sapphire Tip

Diameter	Angels	Working Length
2.7mm	0°	110mm
2 7 mm	0°	175mm
4 mm	0°	50 mm
4mm	0°	175mm
8mm	70	185mm
8mm	90	185mm



## ENT Surgery Hand Instrument Set

(Export Quality with medical grade steel both SS & Titanium)

- FESS SUGERY SET (SET OF 11 INSTRUMENTS)
- TYMPANOPLASTY SET (SET OF 22 INSTRUMENTS)
- MICRO LARYNGEAL SET (SET OF 15 INSTRUMENTS)
- OESOPHAGOSCOPY SURGERY SET (SET OF 12 INSTRUMENTS)
- BRONCHOSCOPY SURGERY SET (SET OF 12 INSTRUMENTS)
- MASTOID SURGERY SET (SET OF 28 INSTRUMENTS)
- SEPTORHINOPLASTY SET (SET OF 25 INSTRUMENTS)
- PARANASAL SINUS SURGERY SET (SET OF 18 INSTRUMENTS)
- DCR SURGERY SET (SET OF 20 INSTRUMENTS)
- TONSILLECTOMY & ADENOIDECTOMY SET (SET OF 25 INSTRUMENTS)
- TRACHEOSTOMY SET (SET OF 12 INSTRUMENTS)
- CAW THORNE HOOKS SET (SET OF 8 INSTRUMENTS)
- STAPEDETOMY SET (SET OF 9 INSTRUMENTS)
- SHEA EAR OPERATING SET (SET OF 11 INSTRUMENTS)
- AUSTIN MIDDLE EAR SET (SET OF 12 INSTRUMENT)
- MYRINGOTOMY SET (SET OF 15 INSTRUMENTS)
- ENT GENRAL SET O.T. (SET OF 25 INSTRUMENTS)



## Repairing of Sinoscope

- We have facility for repair & service of all make Sinoscope, Laparoscope Cystoscope orthoscope of Chinese as well as German make like storz wolf, styker



## Digital Otoscope

Smart Ear Cana Detector with Screen

- 2 Million HD pixels
- 90° rotating test head
- 2 Types of Accessories

Check accessories\*12





# LED Head Light

Rechargeable Battery with Charger



Option1:LED Head Light 10w (Indian)

Option2:LED Head Light Imported

Option3:LED Head Light Soft Imported

Note : Fibre Optic Head Band also available

# Headband Adjustable LED Surgical Headlight

Input Voltage: 100V-240V 50Hz-60Hz

Adapter voltage: 5V 1A

Lamp Power:LED 5W

Loupes option:2.5X/3.5X

Light intensity: 150000Lux

Light Type: LED

Intensity adjustable or not: Yes

Battery capacity:2000mA

Charging time:1.5-2 hours

Battery backup: 1 pcs

Net weight: 160g

Weight: 1.3kg

Package size: 33\*20\*10CM



Use Operation

Filp up to off the light



Turn on the Light

Working distance : 420mm  
Depth of field : 90mm  
Depth of vision : 100mm

# Repair Facility for Sinoscope / Laparoscope / Cystoscope, Endoscopy Camera, Microscope & All kind of Medical Endoscopy Equipments.



## ENT Operating Microscope (Pioneer India)

### Technical Specifications

- Description : Advance Optical System designed for easier handling and versatility in ENT surgery.
- Magnification : 5X, 10X, 20X (3-step)
- Binocular Tube : 90°
- Eye Piece : 12.5x paired wide field.
- Objective Lens : F = 200mm
- Light Source : 100 watt L.E.D. Light.
- Illumination : Direct LED Light.
- Arm : Counter balance pantographic arm with 320° rotation.
- Stand : Mobile floor stand on caster wheels for easy handling and absolute stability.
- Power supply : AC 220V/240V

### Optional :

- Lens 400mm
- Beam splitter with Camera Attachment
- Endoscopy Camera with Monitor
- 5 Step Magnification



## Portable Table Top Microscope

### Technical Specifications

- Three step magnification 5x, 10x, 20x.
- Illumination- direct LED light.
- Light weight, easily dismantable.
- Useful for mobile purpose.

### Optional - Carrying Case





**Ent Operating Microscope (Labomed, USA)  
5 Step And 3 Step Both Available**

**Technical Specifications**

**Binocular Tubes:**

90° Straight head, IPD 55-75mm. (210° Tilttable Head Optional)

**Magnification:**

5 Step: 0.4X, 0.6X, 1.0X, 1.6X, and 2.5X.

**Objective:**

F = 250mm Objective with fine focus (200-400 Nuar Lens Optional)

**Illumination system:**

Cold LED Source, LED life more than 30,000 hours.

**Stand:**

Prima ENT microscope stand, Castor wheel with locking system

**Build-in-Filters** Green & Yellow

**Vertical Movement of Arm** - 550mm

**Motorized System Optional**



**Labomed, Microscope Accessories**



**Lens 400mm**



**Single Beam Splitter with HD Camera (Inbuilt Recording)**



**Double End Beam Splitter**



**Endo Adaptor**